



Please join us [online](#) or in person this weekend as we continue our sermon series "I Never Said That." We hope to see you soon!



Trikes, Trails and Triumphs

Kids, adults test their limits at WC Kids' sixth annual Fun Run

May 2 | 9 a.m. | WC East Parking Lot

By Leilani Barrera

As we age, we often forget how enjoyable physical activities can be and the happiness of reconnecting with activities that once brought us joy as children. Usually, it isn't until we have children that we remember how much we loved simple activities. Nowadays, kids tend to spend more time on screens than in physical play. As adults, we are responsible for encouraging them to get moving and play outside. The secret is to make it fun and engaging!

A truly fun and interactive way for you and your kids to unleash some energy is by participating in our sixth annual Kids Fun Run and Ninja Warrior Obstacle Course. On May 2, kids and adults alike are invited to master our 1-kilometer course. Presented by WC Kids, all ages are encouraged to test their limits and conquer challenges—either by foot, bike or scooter.

Starting in 2021 as a 5K fundraiser to raise \$5,000 for Christ's Haven in Keller, the event has since transformed into the Fun Run we know and love today.

"The heart of the Fun Run is a desire to build the church community by bringing families and church members together

TRIKES cont'd on page 3



In the Bag...

By Dr. Todd Renner

If you were watching The Masters last weekend, you may have seen one of the more unforgettable moments in recent tournament history: a perfectly struck golf shot that went...well...perfectly wrong.

It sailed off line, headed toward the gallery, and instead of finding rough or sand or pine straw, it found something far more unusual—a patron's shopping bag. Not near it. Not beside it. In it. Just like that.

Now, I don't know what was in the bag before that moment—maybe a souvenir cap, a pimento cheese sandwich, a

MUSINGS cont'd on page 3

A MIRACULOUS WEEKEND

From a rain-soaked sunrise service to the joyful sounds of "O Happy Day," it was a beautiful Easter at White's Chapel! Families gathered in celebration throughout the day, ending at the Columbarium—a sacred closing moment of reflection, remembrance and hope—as we proclaimed the greatest truth of all: the tomb is empty, and He is risen!

From Swamp to Stage: Theater 1 Brings *Shrek* to Life

April 22 | 6:15 p.m.
April 23 & 24 | 7 p.m.
The Foundry | Admission is Free

White's Chapel Theater 1 is heading to the swamp this spring with its production of *Shrek the Musical*—a lively, laugh-filled show brought to life by students in fourth through sixth grade.

Under the direction of Julie Blalock, with music director Eleni Brooke and choreographer Ann-Marie Heilman, the production blends creativity, teamwork and plenty of personality. Behind the scenes, a dedicated student crew—including Lee Blalock, Rylan Dixon, Zoey Heilman, Emily Morris, Jack Paschall and Jude Schultz—helps keep everything running smoothly. Lighting design is led by Christian Brooke, with sound support from WC Productions. Costumes, set

SHREK cont'd on page 2



Celebrating the Journey, Blessing the Future

Senior Sunday | May 3 | 11 a.m. Worship Service

By Leilani Barrera

As the school year draws to a close, many families are preparing their children for graduation. With exciting college plans and significant life changes on the horizon, it's important to pause and applaud this meaningful achievement. Over the past four years, students have navigated young adulthood, faced diverse life experiences, and grown in countless

ways while balancing academic responsibilities. Each student has embarked on their own special journey and found unique ways to reach this amazing milestone.

On May 3, during the 11 a.m. worship service in the main Sanctuary, the church will gather to honor graduating high school seniors with a time of recognition, prayer and encouragement.

"Senior Sunday is designed to be a

SENIORS cont'd on page 3

Compassion meets Construction Super Saturday Project builds beds

By Leilani Barrera

April 25 | Evans Hall | 9 a.m.-1 p.m

"Now I lay me down to sleep,
I pray the Lord my soul to keep;
Angel watch me through the night,
And wake me with the morning light."

Designed as a calming evening hymn, this beautiful 18th-century prayer offers comfort and peace,

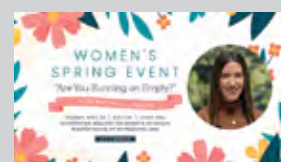
often recited as a bedtime prayer to soothe worries before sleep. This warm and beloved prayer reflects a simple, trusting faith in God's protection and care, even in the vulnerability of sleep.

While most of us reading these words have somewhere to sleep tonight, heartbreakingly, do not. According to various sources, nearly 140,000 children

SATURDAY cont'd on page 2

INSIDE THIS WEEK'S ISSUE

Classic Adult Fellowship Update
Cantaré Spring Concert Info



Women's Spring Event
April 28 | See Page 4

Saturday

Cont'd from page 1



Register [online](#) or scan the QR code.

in the U.S. do not own a bed of their own. While many would consider a bed a commonplace household item, this basic need is considered a luxury amenity by others.

For the first time ever, White's Chapel is teaming up with the charity organization Sleep in Heavenly Peace (SHP) for a Super Saturday bed-building event. On April 25, from 9 a.m. to 1 p.m., we will be building more than 80 beds for kids in our local community who are currently sleeping on the floor.

SHP is passionate about making sure no child sleeps on the floor. Their website says it all in their mission: "All children deserve a safe, comfortable place to lay their heads." They believe that a bed is essential for the proper physical, emotional and mental support that a child needs and that, without one, a child's well-being and level of happiness and health can be deeply affected.

Originating from the construction of one bed for a single family, this project developed into a 501(c)(3) nonprofit. As they've grown, they've gathered the support of nationally recognized partners, including Lowe's, Ashley Furniture, DeWalt, FLEX and Jockey, to name a few.

Both SHP and White's Chapel believe that change begins by taking the focus off yourself and focusing instead on doing good for others; it is then that you can truly receive joy. With more than 1,194,712 recorded volunteer hours spent making an immediate impact, White's Chapel aims to link arms and join the effort.

This is a fantastic learning experience, and it's a great way to get the whole family together for a fun, hands-on activity that supports a noble cause. "This is our first collaboration with SHP," says Jared Smith, Missions Associate Director. "We hope that this will give our congregation yet another fantastic

opportunity to serve our community while providing families the chance to serve together, doing something they may not normally do." This service project is great for those who love working with their hands. However, if that does not describe you, there are still opportunities for you. In the spirit of giving and preparation, our very own WC Quilters will be donating 80 quilts to accompany each bed. "We will place the finished quilts for SHP in boxes to store until the Super Saturday event," says Kim Tong, Missions Ministry Coordinator. "The quilts will be given to children in need. Along with the beds from SHP, the hope for these quilts is that children will have a safe and cozy place to sleep. The attention given to each quilt is meant to be a special reminder that they are loved."

On Friday, April 24, the WC Quilters need help filling boxes with their quilts. Volunteers are welcome to participate. If you have any questions, please contact Kim Tong. "Our ladies in our WC Quilters ministry will be making 80 quilts so that each child will have a new quilt made with love for their very own bed," says Sharon Nelson. "If you can help, please join them in AE Room 3204. They will be there from 2:30 to 5 p.m."

Never used power tools before? Don't worry. SHP will provide everything and show you what to do. You will receive instructions and get to work cutting, fastening and sanding wood into parts for the bed frames.

"There's no need to be intimidated!" says Smith. "There will be jobs for all skill levels, even if they've never held a tool before. It will be a fun event for everyone, with the opportunity to learn new skills and build community."

We're all in this together to help meet this need for children in our community. Take advantage of this opportunity, and let's build some amazing beds together!

If you have questions, please reach out to Jared Smith.

Jared Smith | jsmith@whiteschapel.org
Kim Tong | ktong@whiteschapel.org



Shrek

Cont'd from page 1

design and painted backdrops are a collaborative effort, with students playing a key role in bringing the world of *Shrek* to life—enhanced this year by digital backdrops that add depth and movement to each scene.

The cast of *Shrek the Musical* reflects a lot of spirit, bringing together a wide range of young performers who each play a part in telling this beloved story. Participants include Maya Abdelfattah, Lilly Alsop, Luca Arnold, Madison Beer, Caroline Beal, Lilly Beggs, Jessie Beggs, Brielle Biswurm, Sloane Barnes, Violet Bowen, Levi Bowen, Emilia Ciccarella, Campbell Couch, Emily Delgado, Madison Dixon, Benjamin Eyherabide Pons, Nicholas Elliott, Charlie Eure, Harper Fergeson, Nora Frost, Winnie Hood, Charlie Hudak, Lucy Hatala, Finley Horn, Truman Hopkins, Deckyr Kittilsen, Katie Kirby, Colton Langan, Bella Lay, Tyler Ledlie, Nate Lester, Emma Lupascu, Kinsley McMaster, Hailey McMaster, Nora McHugh, Emma McShea, Maggie McShea, Braden Meek, Nora Meyers, Eliza Morris, Ellie Mulligan, Brisbane Myers, Raegan Nelson, Elliot Pearson, Mara Rainer, Ryan Reid, Ryane Reynolds, Quinn Rumppler, Anika Shah, Evie Self, Violet Sinclair, Ashlynn Takala, Marina Tan, Sydney Thompson, Abigail Vanderpool, Isabella Wang, Grace Walther and Galiana Zoller.

Set in a whimsical fairy-tale land, *Shrek* follows a grumpy ogre whose quiet swamp is overrun by displaced storybook characters. In an effort to get his home back, Shrek agrees to rescue Princess Fiona for the comically overconfident Lord Farquaad. What begins as a simple mission quickly turns into something more, as Shrek discovers friendship, courage and an unexpected connection—with one big mystery still in play: Why does Fiona disappear each night at sunset?

For the students involved, the magic of Theater 1 goes far beyond the stage.

"The most fun part about working with theater kids is their enthusiasm," said Emily Morris. "From playing games to singing, they are filled with so much joy. They come out of their shells and use their creativity and humor in everything."

Rylan Dixon sees that same energy through a slightly different lens.

"They meet every challenge with enthusiasm," Dixon said. "If you tell them to do something, they'll do it—usually with a smile. Everything feels like a privilege to them, and that kind of optimism is so refreshing to see."

That energy, while contagious, can also present challenges.

"The number of kids makes it challenging at times to keep everyone focused," said Zoey Heilman. "But getting to know them and being with my theater family makes it all worth it."

For Dixon, the challenge looks a little different.

"The biggest challenge has been my own schedule," he said. "I want to put more time into it, but sometimes conflicts get in the way. It makes the moments I can be there even more meaningful."

All three—Morris, Heilman and Dixon—are part of the student "A-team," serving behind the scenes in a ministry they once participated in themselves. For them, it is a meaningful full-circle experience.

"I get to help create the same kind of home for these kids that I had," Morris said. "Watching them grow, build friendships and gain confidence—it's incredibly special."

Heilman agreed, adding that the experience is rooted in something deeper.

"I get to spend time with my friends and family while also helping others grow in their faith," she said. "It's a privilege to be part of that."

Dixon echoed that sense of purpose. "When I was a student, WCT gave me so much—joy, belonging and fulfillment," he said. "Being able to give that to others means the world to me. It has been one of my homes for as long as I can remember, and now I get to help create that same foundation for the next group of students."

That sense of belonging defines Theater 1. It is a place where students are encouraged to try something new, step outside their comfort zones and discover gifts they may not have known they had.

Grab your family, invite a friend and come take a trip to the swamp. With big laughs, familiar characters and plenty of heart, *Shrek the Musical* promises a fun-filled evening for all ages. Best of all, admission is free—so bring your crew and enjoy the show!

FINANCIALS			
APRIL			
April	2026	2025	
Week 1	\$309,975	\$178,857	
Week 2	\$177,716	\$190,820	
MTD Actual	\$487,691	\$369,677	
MTD Goal	\$464,285	\$448,782	
	\$ 23,407	\$ (79,105)	
YTD Actual	\$3,344,117	\$3,189,477	
YTD Goal	\$3,158,204	\$3,033,864	
	\$ 185,914	\$ 155,613	

WEEKEND PREACHING SCHEDULE				
SANCTUARY		THE FOUNDRY		
Sun. 8:20 a.m. Traditional	Drs. John McKellar & Todd Renner		Sat. 5:30 p.m. Contemporary	
		Rev. Sam Robbins		
Sun. 9:30 a.m. Contemporary	Drs. John McKellar & Todd Renner		Sun. 11 a.m. Foundry Service	
		Rev. Sam Robbins		
Sun. 11 a.m. Foundation	Drs. John McKellar & Todd Renner		WALTON CHAPEL	
		Sun. 9:30 a.m. Traditional		
		Rev. Lori Cotton		

WHITE'S CHAPEL
HERALD
Church office—(817) 481-4147

Editor Debbie McKellar
Managing Editor Sean Bogan
Graphics and Design Susanna Cunningham
Graphics Consultants Alec Hanson & Sarah Hamilton

White's Chapel Herald USPS 25541 is published weekly except for the second week of March and the week of Thanksgiving, and then changes to alternate weeks beginning the Friday after Memorial Day, changing back to weekly in mid-August, and skips the week between Christmas and New Year, by White's Chapel Methodist Church, 185 S. White Chapel Blvd, Southlake TX 76092-7308. Periodicals Postage is paid at Grapevine, TX and additional mailing offices. Subscription rate: \$10 for one year. POSTMASTER: Send address changes to White's Chapel, 185 S. White Chapel Blvd, Southlake, TX 76092-7308



METHODISM 201

Through a recent dinner and documentary presentation, Dr. Todd Renner further explores the life and legacy of John Wesley, founder of Methodism. If you missed it, scan the QR code to find it online!



CAF Connections

Classic Adult Fellowship, or CAF, is a great group for those in the 55 and better stage of life! You do not have to be a member of White's Chapel to attend functions, so friends are always welcome. If you are not a member and would like to be on the mailing list for upcoming opportunities and connections, please email or call Laurie Williams, Director for Classic Adult Fellowship. Consider attending one of our monthly events!

VBS for Seniors is BACK!

Yes, you read that correctly! Why should the kids have all the fun? This summer, Classic Adult Fellowship will host our 5th vacation Bible school for those 55 and up! Pastors, staff, and volunteers are excited to provide some fun for our seniors featuring singing in the chapel, prayer time, crafts, Bible stories, games, trivia, guest speakers, food trucks and more!

Our VBS theme this year is "Under One Canopy," to coincide with WC Children's rainforest theme the previous week. According to The Smithsonian Institute, the canopy is "...the dense, thick 'roof' layer (roughly 10–40 feet thick) formed by the interlocking branches and leaves of mature trees..." This is where most of the vegetation and animals thrive as well. As seniors, we have developed wisdom

and strength to protect those that are under our cover. Our maturity is not a weakness, but a strength when we stand together. For senior VBS, we will focus on the branches that interlock within our Christian community to keep us strong in faith. If you have never attended, this is a wonderful time to find connection, fellowship, and joy this summer and beyond!

Mark your calendars for June 16–17 from 8-noon and register online today. The cost is \$30 and it is open to anyone, not just White's Chapel members! What a great opportunity to revisit our childhood, make new friends, have fun with current members, and share the joy of Jesus with others!

What's on the Calendar?

- **Friday, April 24 | 11 a.m. (Doors open at 10:15) Spring Fun Luncheon**
A wonderful meal as well as a very fun guest appearance (you won't want to miss this!) Please email or call Laurie Williams to reserve your spot so that we plan for plenty of food, supplies, and seating.
- **Thursday, May 7 | 1.30 p.m.—CAF Monthly Movie in Rawlins Hall**

Director Laurie Williams
williams@whiteschapel.org



Seniors

Cont'd from page 1

meaningful and memorable experience for each student," said Bella Briseno, WC Students associate. "The service includes a time for the church to come together to pray over the seniors, speaking encouragement and blessing over this next chapter of their lives."

By reflecting on their journey and "cheering them on as they step into what's next, the congregation celebrates not only what these students have accomplished, but who they have become through dedication and perseverance."

Many of these students have been part of the church family since childhood, growing up with their faith journeys nurtured and supported along the way. As the students matured, previous generations committed to investing in them personally and spiritually long before graduation.

"Senior Sunday is a meaningful way for the church body to follow through on a promise made years ago," Briseno said. "Many in the congregation were present when these students were baptized as infants, committing to help raise them in a loving, faith-filled community that would always point them back to Jesus. Senior Sunday brings that journey full circle—a chance to celebrate how that commitment has been lived out and to send these students off with continued encouragement, love and support."

Like a traditional graduation ceremony, each senior will walk across the stage,

shake hands with the senior pastors and receive a book as a personal gift. A childhood photo and a senior photo of each student will also be displayed as they are recognized.

As a church family, the hope is that this collective show of support will help students step confidently into the future, grounded in their identity as children of God and assured they are loved wherever God leads them.

"It's really about making sure every senior feels seen, known and celebrated," Briseno said. "It reminds them they're not alone—they've been supported along the way and will continue to be."

To this year's graduating seniors, Briseno offers this encouragement: "As you step into this new chapter, remember that you don't go alone. You carry with you everything you've learned, the people who have supported you, and the faith that has been poured into you over the years. There will be new challenges and opportunities ahead, but also so much growth and purpose waiting for you. Stay grounded in what matters most, keep leaning into your relationship with Jesus, and don't be afraid to step into the unknown with confidence. Your church family is proud of you, cheering you on and believing in all that God has in store for your future."

Families wishing to participate in the photo slideshow should submit a childhood photo and a senior photo by Thursday, April 24, through the church website.

For more information, contact Bella Briseno.
Bella Briseno | bbriseno@whiteschapel.org



Trikes

Cont'd from page 1

for a morning of fun, connection and meaningful fellowship," says Erin Zajac, Outreach and Events Coordinator. "It is intentionally designed with family-friendly activities that encourage all ages to be active, connected and create lasting memories."

Check-in begins at 9 a.m., where participants will receive their event

T-shirt and gather at the starting line for prayer. The run kicks off at 9:30 a.m. and concludes at 11 a.m., when families can cool down and celebrate with a complimentary snow cone from Kona Ice.

"My favorite part of the event is seeing families come out and enjoy time together—moving, playing and even competing against one another," shares Zajac. "It's more than just walking or running

a lap around the church; it's talking and connecting with other families as they conquer the course. Getting to create and provide opportunities for families to come, bond and make memories is the highlight of my job!"

This action-packed event will test your child's balance, agility and strength, helping them become adept at various tasks. Balance exercises stretch more than muscles; they boost cognitive and physical skills, increase confidence, support sensory integration, foster independence and instill a sense of accomplishment. This empowering foundation prepares them for life's challenges.

"Families can look forward to a fun,

**SATURDAY, MAY 2
9:30 A.M.**

NINJA WARRIOR OBSTACLES
PRESCHOOL BALANCE ACTIVITIES
COURSE TO WALK/RUN OR BIKE

\$10 PER PERSON
FREE T-SHIRT WITH REGISTRATION BY APRIL 15.

relaxed morning filled with movement, connection and excitement," says Zajac. "Along the way, there will be a variety of interactive stations, including a Ninja Warrior-style obstacle course, an inflatable trike race (trikes provided), bubble stations and various obstacles to move over, under and navigate through."

If you have a child with special needs or mobility limitations, this course is paved and easy to navigate—even for those in wheelchairs. There's a gentle incline across the parking lot, so it's accessible and fun for everyone.

"Along the way, there will be a variety of interactive stations, including a Ninja Warrior-style obstacle course, an inflatable trike race (with trikes provided), bubble stations, and various obstacles to move over, under, and navigate through."

"There will be activities for those with mobility limitations and special needs to participate as well, including a bubble station that is fun for all!" says Zajac.

To guarantee a T-shirt, registration must be completed by April 19. Registration is \$10 per person. Participants will receive final event details—including parking information—before the event. We also ask all participants to fill out an online liability waiver or a hard

copy on the day of the event. Helmets are required for anyone riding a bike or scooter.

Participants can take on exciting obstacles such as trapeze bars, trampolines, rings, cargo nets, a warped wall and more. You can ride, run or roll to the finish line. The goal is to have fun and create unforgettable memories with your family. Even your kid-friendly, four-legged friends are welcome to join the fun. Your family will have opportunities to encourage one another, laugh together and celebrate.

Bring the whole family for a time of unforgettable fun. Any questions you may have can be directed to Erin Zajac.

Erin Zajac | ezajac@whiteschapel.org

Musings

Cont'd from page 1

receipt that will never be looked at again. But I do know this: that person showed up to Augusta National expecting a normal day: a beautiful day, sure... but normal. And then, out of nowhere, something completely unexpected landed right in their hands. And I couldn't help but laugh.

Because, sometimes, life feels like that, doesn't it?

We come carrying our bags—full of plans, expectations, worries, routines. We know what we packed. We know what we're prepared for. We've got the day mapped out, the week scheduled, the future (we think) accounted for. And then something comes flying in from out of nowhere.

Sometimes it's inconvenient. Sometimes it's disruptive. Sometimes it's not what we would have chosen.

But every once in a while...
It's grace.

Grace that shows up in the interruptions. Grace in the conversations we didn't plan to have, in people we didn't intend to meet, and in the

moments we almost missed because we were so focused on what we thought the day was supposed to be.

The Scriptures are full of those moments. A burning bush in the middle of an ordinary workday. A teenage girl startled by an angel. Fishermen interrupted on the shoreline. A tomb visited in grief that becomes the birthplace of hope.

No one woke up that morning expecting anything unusual, but God has a way of sending things into our lives that we never could have orchestrated on our own.

Which raises a simple question for all of us: What do we do when something unexpected lands in our bag? Do we dismiss it? Brush it off? Try to return it to where we think it belongs? Or do we pause long enough to wonder: What if this is grace?

Because, sometimes, the very thing we didn't plan for becomes the very thing God uses. And sometimes the holiest moments of our lives don't arrive with warning...they just drop in. So today, carry your bag. Make your plans. Walk your path. Do the good, faithful work in front of you... but keep a little room to be surprised by the grace that meets us along the way.

COMMUNITY CONNECTIONS



Women's Bible Study:
When God Doesn't Fix It: Learning to Walk in God's Plans Instead of Our Own
By Laura Story
Thursdays, April 30–May 28
9:30 a.m. | AE Room 3204

Is it possible for our faith in God to deepen despite loss, heartache, struggle, and pain? God doesn't promise to save us from all hardship. No matter how hard we pray, sometimes our circumstances don't change. Join facilitator Val Reed for this five-week study and see how the hardships endured by some of the men and women of the Bible teach us how God works in our lives to bring us closer to him. Understand that the possibility exists for a deeper intimacy with God, whose everlasting promises remain no matter what happens in this life. Please register online.
Val Reed | lreed6806@outlook.com

WC Theater 2 Performance
Anastasia: The Musical
May 6–8 | 7 p.m. | The Foundry | Free

Anastasia: The Musical is the new musical about discovering who you are and defining who you're meant to be. This dazzling show transports its

audience from the twilight of the Russian Empire to the euphoria of Paris in the 1920s, as a brave young woman sets out to discover the mystery of her past. Pursued by a ruthless Soviet officer determined to silence her, Anya enlists the aid of a dashing con man and a lovable ex-aristocrat. Together, they embark on an epic adventure to help her find home, love and family.



Thrive Family Luau
Saturday, May 9 | Evans Hall

Dust off your flip flops, grab your leis, and get ready to hula your way into an afternoon full of fun! Join us for a Thrive Family Luau, a relaxed and welcoming event designed especially for individuals with additional needs and neurodivergences.

We're bringing the island vibes with tropical music, games, sensory-friendly activities, yummy island-style treats and time to connect with other families in a supportive and joyful environment. Whether you stay the whole time or pop in for a bit, there's a place for you here! Bring the whole family, invite your friends and celebrate together island-style!
Chelsea Cooper | ccooper@whiteschapel.org



Join the WC Women on Tuesday, April 28 for dinner and teaching by WC's own, Michelle Joseph. Many of us are just pushing ourselves through each day on our own strength, tired and running on empty. Michelle will remind us through scripture that when we depend on God, God provides enough for each day. Come and reflect on what it might look like to stop striving on your own and start trusting God's steady care for your daily needs. Dinner will begin at 6:30 p.m. in Evans Hall. Cost is \$15 per person, and registration is required for dinner and childcare. Register [online](#) or by scanning the above QR code.

Rev. Joy Roberson | jroberson@whiteschapel.org



Construction Updates

Current alternate routes (subject to change)

It's a Mess to the Bless!

Construction is underway, and yes—parking and navigating the campus may be a bit more challenging during this time. We appreciate your patience as we continue building for God's work.

Please be sure to follow all posted construction signs, directions and safety barriers. Because the construction layout is evolving daily, routes, signage and fencing may change frequently.

The best advice for the coming months? Stay flexible—and thank you for your understanding as we grow together.

WAYS TO GIVE AT WHITE'S CHAPEL

- TEXT**: TEXT "WCMC" TO 77977
- ONLINE**: GIVE ONLINE AT WHITESCHAPEL.ORG
- CASH**: CHECKS PAYABLE TO "WHITE'S CHAPEL"
- APP**: CLICK "GIVE" AT THE BOTTOM RIGHT

WHITE'S CHAPEL | 185 S. WHITE CHAPEL BLVD. | SOUTHLAKE TX, 76082

Prayer List


Dave Aistrup, Malta Akins, Cristina Almeida, Roland Anderson, Andrew Armbrust, Chase Attwood, Jack Beam, Brent Bedgood, Julie Bessire, Ruth Blaser, Nancy Bradley, Jack Brookman, Ray Burget, Bobbie Cameron, Jackie Black Chaffins, Lola Cobb, Carolyn Cockerell, Janice Colvin, Bill and Jimmie Nell Cook, Clay Cook, Kelly Cook, Leslie Craig, Karsen Crow, Paul Cuttica, Rachel Dahl, Logan Davis, The Dicken Family, Karen Dickey, Tommy Duer, Kimberly Eltiste, Kerry Emmert, Linda Evans, Ralph Evans, Reed Evans, Steve Ferney, Carol Fortune, Kelly and Austin, Patricia Garrett, Morris Gates, Shelly Gillette, Jim Hall, Kay Hasseltine, Christy Hillmer, Todd Hinton, Robert Holmes, Bill Hood, Michelle James, Tom Jenkins, Lynn Joseph, Jerry Kight, Dolores Kopesec, Amy DeGray and Family, Connie Lamb, Debra Langdon, Annette Willmon Lee, Perry Lindsay, Tim Little, Robin Long, Victoria Loy, Michael Lucas, Marshall Ludwig, Jerry and Linda Lukas, Liza and Ruel Lunar, The Major Family, Sharon Martin, Sue McNutt, Denise Missimo, Matthew Mitchell, Sherry Modeer, Jamaica Monticello, Kayla and James Oliver, Christopher Owen, Katie Park, Connie Parra, Dee Perkins, Judy and Joe Petrazio, Azor Phelps Sr., Kay Pierce, Doris Pope, David Pote, Bill Preston, Hall Purdeville, Robert Radtke, Norma Resendiz, Eddie Robertson, The Ruby Family, Bisquit Sadler, The Salvation Army Women's Auxiliary, Butch Sanders, Peyton and Kohl Schuler, Barbara Shaw, Hannah Shroyer, Roland Sierra, Paul Sikes, LeGrand Spradley, Luke Strain, Steve Swanston, Elmer T., Deanna Talbott, Paul Tanner, Kaelib and Catie Thomas, Randy Thomas, U.S. Military, Paul Wang, Rick Warner, Joe Watford, Shannon Weimers, Kimberly West, Ellie Whiddon, Wes Whiddon, Leslie Williams, Carroll Willis, William and Olivia Wilson, Vicki Winn, Melinda Witt, Janie Woodward, Trina Zagar, Daniel and Jackson. Recent Deaths: The Apel Family, The Family of Ed Asten, The Family of Jim Blair, The Family of Jeanna Brady, The Family of Kenneth L. Harder, The Family of Raymond Hebert, The Family of Reba Madera, Tom Mann and Family, The Family of Tessa McCall, The Family of Geri Mundhenk, The Family of Brian Nance, The Family of Kenneth Preston, The Barbara and Alex Rocha Family, The Family of Shirley Runyon, The Family of Dolores S., The Family of Scott Sabre, The Family of Jean Elias Samaan, The Family of Jimmie Slough, The Family of Steven Van Wie, The Family of Kyley Weaver, The Family of John Wermuth.

Submit names via QR code or www.whiteschapel.org/prayers.html. (Names will remain on this prayer list for two weeks unless otherwise notified via QR code or www.whiteschapel.org/prayers.html.)

